

# NURTURING MINDS THAT MOVE THE WORLD



ADITYA BIRLA  
WORLD ACADEMY

Learn | Achieve | Inspire

# When tomorrow calls, our compassionate and global leaders will rise

## Some to move mountains

“

"ABWA is a world in miniature where students get life lessons as they traverse the journey of informational and transformational learning. Warmth, joy, cheer and fun, it is a safe place where every child feels emotionally settled."

**Mrs. Radhika Sinha**

Director of Academics -  
Aditya Birla Education Trust



## Others to move moments

“

"At ABWA, independent thinking is at the heart of our educational philosophy. Through inquiry-driven classrooms, research-based formative assessments, and real-world challenges, students are encouraged to develop their own ideas and perspectives."

**Mrs. Shalini John**

Principal -  
Aditya Birla World Academy

## All to move the world

At ABWA, we strive to create a space where students not only learn but truly discover who they are, where education is a journey of exploration, where intellect is honed, character is nurtured, and curiosity is awakened. Our students engage deeply with academics while being inspired to understand the world through immersive, cross-cultural experiences. By cultivating emotional resilience and critical thinking, we empower them to grow into compassionate, capable leaders. As they step into the future, they do so with confidence and purpose.

**Mrs. Neerja Birla**

Founder & Chairperson -  
Aditya Birla Education Trust





# Pioneers of education, standing tall

Under the visionary leadership of Mrs. Neerja Birla, the Aditya Birla Education Trust (ABET) was founded to create institutions that nurture intellectual curiosity, emotional well-being, and global competence. Aditya Birla World Academy (ABWA), established in 2008, embodies this mission. ABWA is among India's top-ranked international schools, offering IGCSE, IBDP, and A-Level curricula and ensuring holistic development. ABWA's students have consistently secured placements in prestigious universities, making a difference worldwide.

ABWA integrates state-of-the-art infrastructure, cutting-edge technology, and a strong values-driven education to empower the compassionate, global leaders of tomorrow.



## Purpose

To nurture well-rounded individuals who lead with confidence, are grounded in their roots, and are driven by a sense of responsibility to the world.

## Vision

To be the pioneers in education, blending global standards while being grounded in values, empowering future leaders to share the world with compassion, confidence, and vision.

## Mission

To nurture the innate potential of our students and mould them into passionate, compassionate, competent, sensitive, value-based individuals with leadership qualities.



We promise to shape  
**big hearts,  
bright minds,  
bold leaders**

Our students will step out into a world that's unpredictable, unfamiliar, and uncharted. But they will not be unprepared. Because here, at ABWA, they have learned to think beyond boundaries, to lead with kindness, and to stand tall in the face of challenges.

They have discovered the power of their voice, the strength of their convictions, and the boundless possibilities that come with a sharp mind and a fearless heart.

## Values that shape our students

At ABWA, we endeavour to make learning fun-filled, active and enjoyable, based on the solid foundation of our core values.



Commitment



Respect



Integrity



Seamlessness



Passion



# Pillars of our philosophy

## Emotional intelligence

More than just academics, we believe in nurturing students who understand emotions - their own and others'. Through empathy, resilience, and self-awareness, we prepare them to lead with heart and build meaningful connections.

“A leader is more than just their achievements. They are defined by how they understand, nurture, and inspire others.”

## Social conscience

True leaders don't just succeed, they uplift others. We instill a deep sense of responsibility, encouraging students to engage with communities, champion causes, and drive positive change for a more just and compassionate world.

“True success is measured not just by what we achieve, but by the impact we create for others.”

## Academic brilliance

Excellence isn't just about high scores, it's about curiosity, critical thinking, and a love for learning. We encourage intellectual exploration, equipping students with the skills to innovate, adapt, and thrive in a rapidly evolving world.

“Knowledge is not just power. It's the foundation upon which dreams are built and realities are transformed.”



# Translating **vision into action**

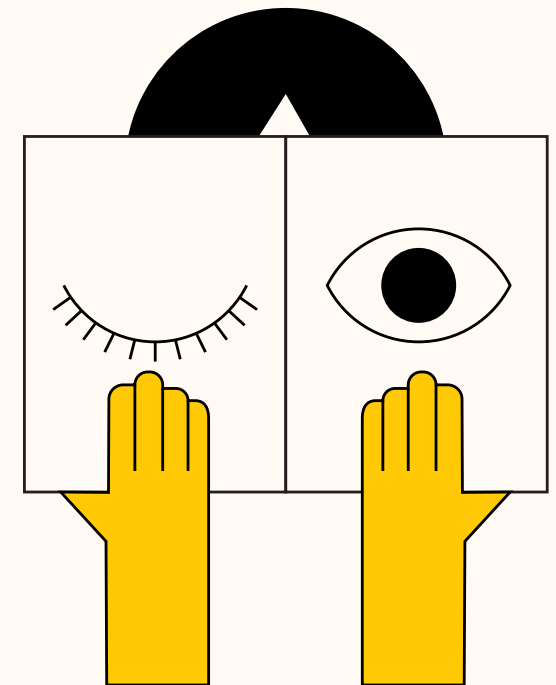


## The **PRIME** framework

**P**ersonalised **R**eport on **I**mpact, **M**indset and **E**mpathy

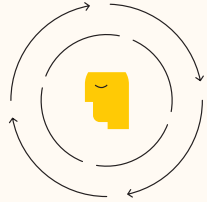
PRIME (Personalised Report on Impact, Mindset, Empathy) is our proprietary framework that tracks each student's growth in three key areas: character, leadership, and emotional intelligence. It offers a structured, measurable way to understand how students are developing as individuals, beyond their academic performance.

With PRIME, our aim is to provide students, teachers, and parents with a deeper, more holistic understanding of the child's growth—beyond academic scores. Where traditional report cards conclude, PRIME begins.





P



### Personalised:

Every child is unique. We observe their strengths to understand what helps them grow best.

R



### Report

Offers clear insight into a child's emotional and character growth, benefitting students, parents and teachers.

I



### Impact

How students contribute meaningfully to their school and community through leadership, initiative, and service.

M



### Mindset

How students engage with learning, respond to challenges, and exhibit resilience and a growth-oriented attitude.

E



### Empathy

How students interact with others, respect diverse perspectives, and foster positive, inclusive relationships.

## The outcomes

### A personalised report

A detailed, annual reflection of the student's growth across the three pillars, highlighting personal wins, progress, and potential.

### A year-on-year growth tracker

A visual timeline of the student's development journey over the years. It is simple, clear, and insightful.

### Deeper conversations and support

PRIME encourages open dialogue between students, parents, and teachers, shifting the focus from scores to self-awareness.

## The value to the ABWA community

### PRIME



#### Empowerment for students

They gain confidence in who they are, learning to lead, connect, and grow. This prepares them not just for exams, but for life.



#### Insight for parents

They get a deeper view of their child's mindset and social development, and can feel assured that their child is becoming thoughtful.



#### Perspective for teachers

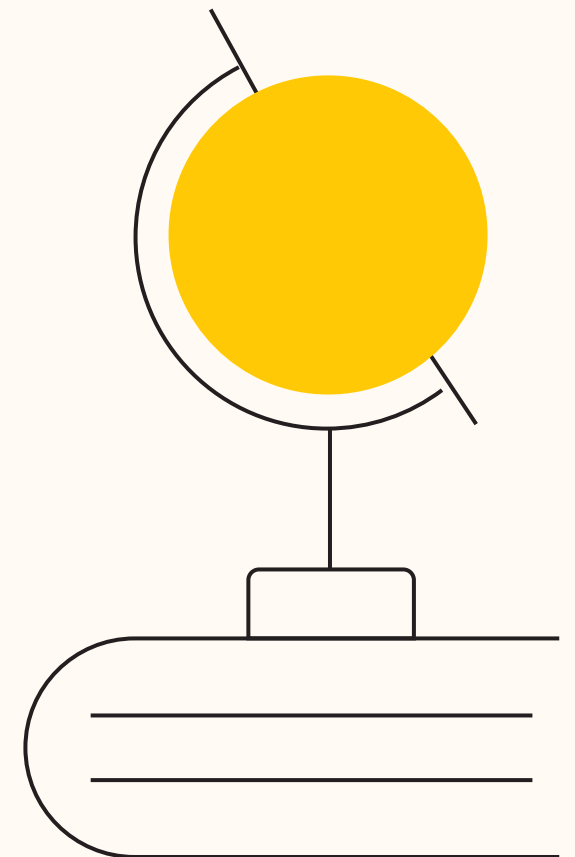
They understand each student beyond academics, offering personalised guidance that nurtures emotional and character development.



Every great journey  
**begins with a  
single lesson**

## The academic pathways

We offer an internationally benchmarked curriculum, integrating IGCSE, IBDP, and A-Levels, ensuring that students are well-prepared for the world's best universities. With a student-centric approach, our faculty focuses on experiential learning, critical thinking, and research-based instruction.





# Nursery and Kindergarten

Our Nursery is a joyful space where little minds grow through play. Guided by compassionate teachers, our curriculum combines the structured, sensory-based learning of Montessori with the creative, project-driven approach of Reggio Emilia. This thoughtful blend encourages independent thinking, collaboration, and joyful expression.



## Learning through play

Encourages curiosity, imagination, and self-expression

## Sensory-based exploration

Hands-on experiments, storytelling, and interactive activities

## Laying strong foundations

Fosters teamwork, resilience, and a strong sense of belonging

## Montessori: Observer

Prepares the environment, respects child's pace.

## Reggio Emilia: Listener

Asks questions, facilitates group projects.

# Teaching approach

## Guiding little learners with care

### Blended philosophy

We combine the best of Montessori and Reggio Emilia, combining hands-on materials with open-ended exploration.

### Guided independence

Daily tasks like pouring, dressing, or tidying up nurture responsibility and focus.

### Concrete foundations

Tactile materials introduce early literacy and numeracy in meaningful, age-appropriate ways.

### Playful learning

Through games, stories, role-play, and sensory experiences, children explore the world at their own pace.

### Creative thinking

Artistic expression and collaborative projects invite children to imagine, build, and communicate ideas.

# Emotional well-being

## Engaging every sense, every day

### Refining the senses

Activities across touch, sound, sight, smell, and taste sharpen perception and focus.

### Tactile exploration

Tools like fabric boxes, mystery bags, and sorting games engage hands and minds.

### Taste & aroma

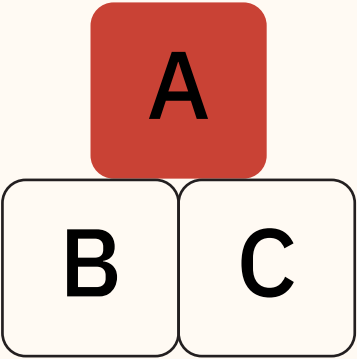
Cooking, scent bottles, and nature-based tasks bring in new sensory vocabulary.

### Learning through materials

Montessori sensorial tools help build order, classification, and concentration—all key to cognitive development.

### Sound & movement

Instruments, bells, and rhythm-based play build auditory awareness and coordination.



## Growing happier hearts

### Safe, loving spaces

Familiar routines and cosy corners offer comfort and security throughout the day.

### Supportive adults

Teachers act as facilitators and observers, respecting every child’s pace and nurturing their potential.

### Expressive tools

Familiar routines and cosy corners offer comfort and security throughout the day.

### Positive socialisation

Children are gently guided to practice kindness, take turns, and build friendships.





## Foundations of numeracy and literacy

### Early math materials

- Number rods for quantity association.
- Sandpaper numbers for tactile learning.
- Spindle box for zero concept.
- Golden beads for place value.

### Early language materials

- Sandpaper letters for phonetic sounds.
- Moveable alphabet for word building.
- Phonetic object boxes for vocabulary.
- Reading cards for early reading.

## Every corner is designed with intention

### Practical Life Zone

Learning everyday skills with real tools

### Atelier

Where messy meets magical

### Nature Corner

Green moments of quiet curiosity

### Reading Nook

A cosy world of words and wonder

### Discovery Table

A place for questions, patterns, and observations

### Sensorial Area

Exploring textures, colours, shapes, and sounds

## Families as co-educators

### Inviting parents into the learning journey

Parent-led  
storytelling and  
gardening sessions

Portfolios and project  
journals with  
day-to-day insights

Conferences that  
celebrate growth,  
not just progress

Workshops to  
explore methods  
and mindsets



# Junior School

At our Junior School, following the Cambridge Primary curriculum, we build strong foundations in English, Mathematics, and Science while fostering creativity, curiosity, and a love for learning. Through playful exploration and gentle guidance, our children grow in confidence, develop essential skills, and embrace the joy of discovery in a caring environment.



## A loving start

Encourages curiosity, imagination, and self-expression

## Playful learning

Hands-on experiments, storytelling, and interactive activities

## Growing together

Fosters teamwork, resilience, and a strong sense of belonging

# Secondary School

Our Cambridge Lower Secondary Programme gently guides students aged 11 to 14, helping them build confidence as they step into more specialized learning. With a balanced approach to academics and skill-building, we nurture analytical thinking, problem-solving, and adaptability, laying the groundwork for future success in the IGCSE curriculum and beyond.



## Bridging the gap

A seamless transition from foundational learning to subject specialisation

## Discovering passions

Encourages early exploration of career interests and strengths

## Sharpening skills

Develops critical thinking, logical reasoning, and effective communication



# High school - A level

The Cambridge International AS & A Levels offer in-depth subject mastery, fostering critical thinking, research, and analytical skills. This programme nurtures independence and prepares students for universities and beyond. Real-world learning is enriched through a three-week internship, bridging education with professional experience.



## Real-world readiness

Internship programme provides hands-on industry exposure

## Personalised pathways

Tailored academic journeys aligned with individual aspirations

## University preparedness

Strengthens research, reasoning, and argumentation skills

# High School - IB DP

The International Baccalaureate Diploma Programme (IB DP) is designed to develop students who are intellectually curious, globally aware, and well-rounded thinkers. At its core, the IB DP integrates Theory of Knowledge (TOK), the Extended Essay (EE), and Creativity, Activity, Service (CAS), ensuring students cultivate critical reflection, independent research, and social responsibility.



## Holistic growth

Intellectual, personal, and ethical development

## International perspective

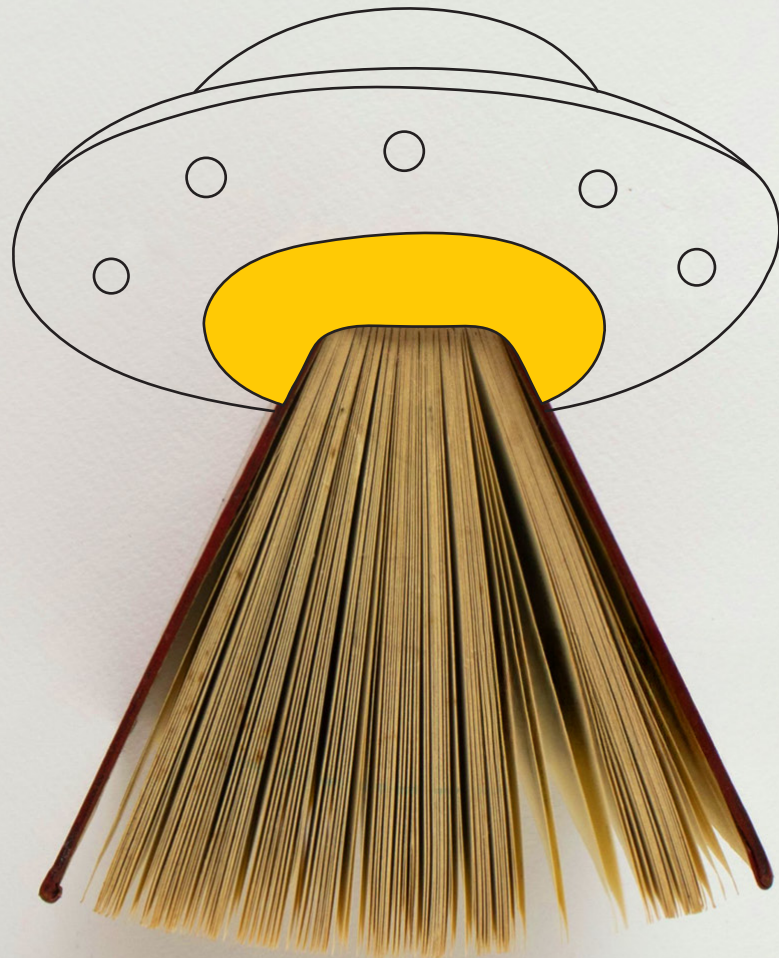
Global curriculum for tomorrow's leaders

## Innovation-driven

Encourages creativity, problem-solving and lifelong learning



Learning doesn't end  
when the books close,  
**it transforms**



## Enrichment activities for holistic development

To enhance athletic and artistic excellence, we offer a diverse range of Extra-Curricular (ECA), Co-Curricular (CCA), and After-School Activities (ASA) that inspire creativity, teamwork, and self-expression. These activities provide students with a refreshing break from academics while nurturing their talents.



# Visual and performing arts

Artistic expression is at the heart of holistic development, nurturing creativity, confidence, and emotional intelligence. Engaging in the arts allows students to explore their imagination, develop discipline, and build collaboration skills.

## Dance

Students experience classical, folk, and Western dance, building rhythm, expression, confidence, and cultural understanding.



## Music

We introduce varied musical traditions, enhancing creativity, focus, emotional depth, and a lifelong love for sound.



## Theatre

Through theatre, students explore character, voice, and movement, building empathy, imagination, and stage confidence.







# Competitive clubs

Competitive clubs help students sharpen their intellect, build confidence, and develop strong communication skills. It fosters critical thinking, leadership, and a global perspective, preparing them to articulate ideas and defend viewpoints.

## Debating

---

## MUN (Model United Nations)

---

## Quiz

# Innovation and STEM

Curiosity fuels innovation, and STEM activities provide students with the tools to explore, create, and problem-solve. By engaging in hands-on projects, they develop logical reasoning, adaptability, and an entrepreneurial mindset.

## Robotics

---

## Coding

---

## Entrepreneurship





# Sports

At ABWA, sports play an integral role in shaping well-rounded individuals. Beyond physical fitness, our programme nurtures teamwork, resilience, and discipline while fostering a lifelong love for movement. We follow the Long-Term Athlete Development (LTAD) model, guiding students from an 'active start' to 'training to compete.'



**Physical education:** Gymnastics, yoga, and structured PE sessions

**Extracurricular activities (ECAs):** Karate, kickboxing, football, basketball, cricket, badminton, horse riding

**Inter-house competitions:** Chess, table tennis, football, basketball, cricket

**Major school events:** Annual Athletic Meet and Aquatic Meet

**Inter-school tournaments:** Participation in Mumbai School Sports Association, District Sports Office, Sports for All, and other private competitions





Meaningful  
change  
begins with  
**an open  
heart and  
helping  
hands**



## Community service

At ABWA, service is at the heart of learning. Through hands-on initiatives, students develop empathy, leadership, and a sense of responsibility. Every class actively plans and implements projects, fostering a lifelong commitment to giving back and making a meaningful impact on the world around them.

## Green initiatives

Sustainability is a way of life at ABWA. Our Green Initiatives focus on mindful resource consumption, waste reduction, and impactful environmental projects. Through hands-on activities, students adopt eco-conscious habits, driving meaningful change and ensuring a greener future for generations to come.





# Inner peace is the foundation of outer strength



## Pastoral care

At ABWA, we believe that a child's well-being is just as important as their academic success. In a world filled with growing pressures, we strive to create a nurturing environment where every student feels safe, valued, and supported. Our pastoral care program is designed to nurture students' emotional and social well-being, building mental resilience, confidence, and a deep sense of self-worth.

### A safe and supportive space

We provide a warm, encouraging environment where students can express themselves freely and grow at their own pace.

### Personalised counselling and guidance

Our counselling team offers individual and group sessions, fostering self-awareness and healthy coping strategies. build self-confidence.

### Empowering life skills

Through guided learning, we help students develop emotional strength, manage stress, and build self-confidence.

### Partnering with parents

Regular workshops led by school counsellors and experts equip parents with tools to support their child's emotional and social well-being.





# Mental health curriculum

A strong mind and a kind heart go hand in hand. The Mental Health Curriculum is designed to help students develop self-awareness, build meaningful relationships, and make thoughtful decisions, equipping them with essential life skills.

## Focus area

### Emotional intelligence and self-awareness

Helping students understand and manage their emotions. grow at their own pace.

### Building healthy relationships

Encouraging empathy, communication, and collaboration.

### Decision-making and goal setting

Guiding students in making thoughtful choices and working towards their aspirations.

## Our approach

Designed by our school counselors, the curriculum is based on Daniel Goleman’s Emotional Intelligence principles and CASEL’s Social-Emotional Learning framework.

Weekly sessions from Grades 1 to 12, offering a structured yet supportive space for students to learn and grow.

Research-backed, interactive teaching methods that make learning engaging and meaningful.





# University counselling

At ABWA, university counselling starts in Grade VIII and continues through high school. Students receive individualised support in subject selection, career exploration, and college applications. Our focus is on finding the right-fit university based on each student’s interests, strengths, and aspirations.

## Structured college planning

Step-by-step guidance for course selection and applications.

## Global university exposure

Meetings with 100+ universities, alumni, and admission reps.

## Standardised test support

Resources and registration for SAT, ACT, PSAT, and more.

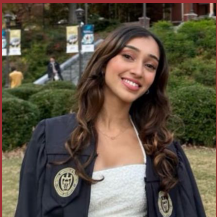
# Alumni success stories

Our graduates go on to study at prestigious institutions such as Harvard, Oxford, Stanford, and IITs, excelling across fields like technology, business, medicine, and the arts.



**Mithil Shah**

Started out in acting and went on to feature in productions like Article 370 and Call Me Bae.



**Aashna Doshi**

Completed a Master’s in ML, became a Software Engineer at Google, built a 40K+ community, and was featured on Times Square.



**Yash Bhansali**

Joined a growth-stage startup and led its global expansion into Thailand and the UAE.

# Modern campus amenities and infrastructure



## Modern classrooms

Equipped with smart technology for interactive learning.



## Computer room

Environments that encourage digital fluency across subjects.



## Robotics lab

Hands-on learning in robotics through coding and engineering.



## Art and music rooms

A corner for creative expression through colour, form, and tunes.



## Science laboratories

Dedicated Physics, Biology, and Chemistry labs.



## University counselling centre

A dedicated space for emotional support and future planning.



## Auditorium

A spacious venue for performances, talks, and events.



## Library

A thoughtfully curated space for research, reading, and reflection.



## Dance studio

A vibrant space for classical and contemporary dance forms.



## Mindfulness room

A calm zone for quiet breaks, mindfulness, and mental wellness.



## Infirmary

On-campus medical support to ensure student health and safety all day.



## Cafeteria

A welcoming space offering nutritious, freshly prepared meals every day.



# Events and enjoyment

## Interschool events

### The happy place

A two-day journey empowering teens to embrace body positivity, self-worth, and healthier self-image.

### Football fiesta

A spirited tournament where players unite, compete, and celebrate teamwork, talent, and sportsmanship.

### ABMUN

A simulation where students become diplomats, tackling global issues through research and negotiation.

## Annual school events

### Fete

A vibrant fundraiser where student-led art, dance, and creativity power support for partner NGOs and causes.

### LIT Fest

Three magical days of books, ideas, and inspiration that celebrate reading, imagination, and literary joy.

### INFINITY

ABWA's global math championship with BITS Pilani fosters analytical thinking and a love for math.

### Swimming Gala

A vibrant showcase of student swimmers, blending skill, fitness, teamwork, and sportsmanship beautifully.

### National Science Day

Celebrating science and robotics through innovation, curiosity, hands-on discovery, and critical thinking experiences.

### Concert

Senior students dazzle and shine in a night of symphonies, showstoppers, and sheer talent.

### Awards Day

Honouring excellence across academics, sports, and arts while celebrating student talent, effort, and dedication.

### Athletic Meet

High-energy track and field events that promote teamwork, house spirit, resilience, and healthy competition.

### Edu Tours

Immersive journeys that connect classroom learning with real-world experiences, cultures, and industry insights.

## Interhouse events

### Sports

A dynamic blend of activities like football, cricket, and tennis, shaping students for national and global success.

### Street play

Students raise awareness on social issues through impactful performances on themes like equality and conservation.

### Art

A simulation where students become diplomats, tackling global issues through research and negotiation.

### Graduation

A heartfelt celebration of student journeys, growth, memories, and stepping confidently into the future.

### Bridge the Gap Symposium

A thought-provoking dialogue platform connecting students, educators, and experts to explore today's key issues.



### Dance

An energetic showcase of passion, creativity, and teamwork through rhythm, movement, and presence.

### Debate

A platform to sharpen critical thinking, public speaking, and engage in intellectual discussions on diverse topics.

### Project day

A day of creativity and innovation, where students collaborate and present work across various subjects.



# Admissions

## Join the ABWA Family

We welcome students who are curious, driven, and ready to embrace learning.

## The admissions process includes

Application  
Submission

Entrance  
Assessment

Personal  
Interview

# Frequently asked questions

### Q: Do you accept admissions for all grades?

A: We accept students in Nursery, LKG, Grade 8 and Grade 11 for both IBDP and A Level. Admission to other grades depends on chance vacancies.

### Q: What bus services are available?

A: The school bus facility is mandatory for all students from Grades 1 to 10. Bus route details are available on our website.

### Q: Is lunch provided at school?

A: Yes, lunch is provided and is compulsory for all students from Grade 1 onwards.

### Q: What is the student-to-teacher ratio?

A: ABWA maintains high teaching standards with a student-to-teacher ratio of 6:1.

### Q: Do you accept mid-term admissions?

A: Admissions are fixed for the academic year, and we do not accept mid-term entries. However, exceptions may be made for international admissions. Please contact our admissions department for details.

### Q: How can we learn more about the admissions process?

A: Please contact our admissions department at [admissions@adityabirlaworldacademy.com](mailto:admissions@adityabirlaworldacademy.com).

### Q: How do IB DP and A Level differ from other curricula?

A: ABWA offers two of the most rigorous pre-university programs—the International Baccalaureate Diploma Programme (IB DP) and the Cambridge A Level programme. Both foster critical thinking, global perspectives, and intellectual curiosity. Grade 10 students and parents are invited to an orientation where details of both programs are shared to help students make an informed choice.





ADITYA BIRLA

WORLD ACADEMY

Learn | Achieve | Inspire

☎ 022 2352 8400

✉ [abwa.info@abet.co.in](mailto:abwa.info@abet.co.in)

🌐 [www.adityabirlaworldacademy.com](http://www.adityabirlaworldacademy.com)

---

Vastu Shilp Annexe, Gamadia colony, J D Road, Tardeo Mumbai - 400 007.